

AGENDA



EXTRAORDINARY COUNCIL MEETING

TUESDAY 20 SEPTEMBER 2022

6.30PM

Live Streaming of Council Meeting

In the spirit of open, accessible and transparent government, this meeting of the Inner West Council is being streamed live on Council's website. By speaking at a Council meeting, members of the public agree to being recorded and must ensure their speech to the Council is respectful and use appropriate language. A person who uses defamatory, discriminatory or offensive language may be exposed to liability for which Council takes no responsibility. Any part of this meeting that is held in closed session will not be recorded

Pre-Registration to Speak at Council Meetings

Members of the public must register by 2pm of the day of the Meeting to speak at Council Meetings. If you wish to register to speak please fill in a [Register to Speak Form](#), available from the Inner West Council website, including:

- your name;
- contact details;
- item on the Agenda you wish to speak to; and
- whether you are for or against the recommendation in the agenda.
- whether you are speaking in person or online

Are there any rules for speaking at a Council Meeting?

The following rules apply when addressing a Council meeting:

- keep your address to the point, the time allowed for each speaker is limited to three minutes. This time limit applies, no matter how many items are addressed by the speaker;
- when addressing the Meeting you must speak to the Chairperson;
- the Chairperson may curtail public participation where the information being presented is considered repetitive or irrelevant; and
- only 3 speakers for and against an Agenda Item are allowed.

What happens after I submit the form?

You will be contacted by Governance Staff to confirm your registration. If you indicated that you will speak online, you will be provided with a link to the online meeting. Your request will then be added to a list that is shown to the Chairperson on the night of the meeting.

Where Items are deferred, Council reserves the right to defer speakers until that Item is heard on the next occasion.

Accessibility

Inner West Council is committed to ensuring people with a disability have equal opportunity to take part in Council and Committee Meetings. At the Ashfield Council Chambers there is a hearing loop service available to assist persons with a hearing impairment. If you have any other access or disability related participation needs and wish to know more, call 9392 5657.

Persons in the public gallery are advised that under the Local Government Act 1993, a person may NOT record a Council meeting without the permission of Council.

Any persons found recording without authority will be expelled from the meeting.

"Record" includes the use of any form of audio, video and still camera equipment or mobile phone capable of recording speech.

An audio recording of this meeting will be taken for the purpose of verifying the accuracy of the minutes.

Statement of Ethical Obligations

The Mayor and Councillors are bound by the Oath/ Affirmation of Office made at the start of the Council term to undertake their civic duties in the best interests of the people of the Inner West Council and to faithfully and impartially carry out the functions, powers, authorities and discretions vested in them under the Local Government Act or any other Act, to the best of their skill and judgement.

It is also a requirement that the Mayor and Councillors disclose conflicts of interest in relation to items listed for consideration on the Agenda or which are considered at this meeting in accordance with Council's Code of Conduct and Code of Meeting Practice.

PRECIS

- 1 Acknowledgement of Country
- 2 Apologies
- 3 Notice of Webcasting
- 4 Disclosures of Interest
- 5 Moment of Quiet Contemplation
- 6 Public Forum – Hearing from All Registered Speakers
- 7 Condolence Motions

Nil at the time of printing.

- 8 Mayoral Minutes

Nil at the time of printing.

- 9 Reports for Council Decision

Nil at the time of printing.

- 10 Reports for Noting

Nil at the time of printing.

- 11 Notices of Motion

ITEM		Page
C0922(2) Item 1	Notice of Motion: Visit of Toyenath Ghimire to the Footprints Festival	5
C0922(2) Item 2	Notice of Motion: Cooks River Corridor Masterplan	7
C0922(2) Item 3	Notice of Motion: Cootamundra-Gundagai Council Demerger Success	34
C0922(2) Item 4	Notice of Motion: Tempe Train Station Accessibility	36
C0922(2) Item 5	Notice of Motion: Support for Wolli Creek Regional Park	38
C0922(2) Item 6	Notice of Motion: Parking	41
C0922(2) Item 7	Notice of Motion: Balmain Town Hall and Civic Precinct Planning	42
C0922(2) Item 8	Notice of Motion: Balmain Sailing Club Pontoon Upgrade	43

Item No: C0922(2) Item 1

Subject: NOTICE OF MOTION: VISIT OF TOYANATH GHIMIRE TO THE FOOTPRINTS FESTIVAL

Council Meeting at its meeting on 13 September 2022 resolved that the matter be deferred to the meeting to be held on 20 September 2022.

From: Councillor Marghanita Da Cruz

MOTION:

That:

1. Note the attendance of Toyanath Ghimire Chair and Citizen Scientist of the Saptakoshi Environment Centre in Nepal at the Footprints Eco Festival in White's Creek Valley on 3 September; and
 2. Receive a report on establishing sister municipality relationship with Barakhshetra Municipality 03.
-

Background

Toyanath Ghimire previously visited the Rozelle Bay Community Native Nursery and adjacent White's Creek Wetlands in 2019.

Saptakoshi Environment Center (Sec) are planning a large frog park, conservation and research center in the Barakhshetra Municipality 03, Ikrai village, Sunsari District Eastern Nepal

The Amha Wetland located in Barakhshetra Municipality 03 is the habitat Wild Water buffalo.

Mr Ghimire was particularly impressed with the Inner West Tool Library's Operation and is thinking something similar would be as useful in his community.

Mr Ghimire also hopes to meet further with council Officer to learn about our Waste Services and other sustainability services.

The Amha Wetland (अम्हा शिम्सर) is natural pond (small lake) situated in Barahakshetra 3.

https://en.wikipedia.org/wiki/Barahakshetra_Municipality



Officer's Comments:

No further comments were required for this Notice of Motion.

ATTACHMENTS

Nil.

Item No: C0922(2) Item 2

Subject: NOTICE OF MOTION: COOKS RIVER CORRIDOR MASTERPLAN

Council Meeting at its meeting on 13 September 2022 resolved that the matter be deferred to the meeting to be held on 20 September 2022.

From: Councillor Justine Langford

MOTION:

That Council:

- 1. Notes the recent public exhibition of the Cooks River Corridor Masterplan (draft) prepared by Canterbury-Bankstown Council (CBC);**
 - 2. Note that the Cooks River Corridor Masterplan (draft) includes areas within the Inner West Council LGA, bordering along the Cooks River;**
 - 3. Investigates developing a Cooks River Corridor Masterplan for the Inner West LGA, with complementary actions to the CBC Plan, prepared in collaboration with key stakeholders, such as Canterbury-Bankstown Council, Sydney Water, Transport for NSW, Cooks River Alliance, residents and other stakeholders; and**
 - 4. Investigates entering a Memorandum of Understanding (MOU) with Canterbury-Bankstown Council to identify and implement the Cooks River Corridor Masterplan across the Inner West LGA.**
-

Background

The development of the Cooks River Corridor Masterplan by CBC presents a great opportunity for Inner West Council to work with Canterbury Bankstown Council to protect and enhance the Sydney Green Grid. The Cooks River corridor falls inside the Sydney Green Grid, which connects town centres, public transport hubs and residential areas. The Cooks River Corridor is located within the South District in the Greater Sydney Metropolitan Region and has been identified as Priority Green Grid Corridors as part of the Sydney Green Grid.

Open space is one of the Inner West's greatest assets. As Council and the community review the Local Area Environment Plans it is important to look holistically at green and open space within the LGA.

This area is one of the most culturally, socially and economically diverse communities in Sydney. It is also bound and intersected by ecological corridors and natural areas that are critical components of Greater Sydney's ecological and hydrological corridors as well as key contributors to the City's liveability and amenity. The corridors intersect many local government areas and central to this project.

As population density increases, the challenge to shape the built environment while promoting sustainable development and also maximising quality of life and well-being becomes more important. The COVID-19 pandemic has further emphasised the importance of open space in supporting the health and well-being of communities. In recognition of these challenges, the Government Architect New South Wales (GANSW) has identified a network of high-quality green spaces that connect town centres, public transport hubs and major residential areas. Known as the Sydney Green Grid, it is an integral part of the Greater Sydney Region and District Plans. The Greater Sydney Green Grid will keep the region cool, encourage healthy lifestyles,

support walking and cycling, provide better access to open space, enhance bushland and support ecological resilience.

Officer's Comments:

No further comments were required for this Notice of Motion.

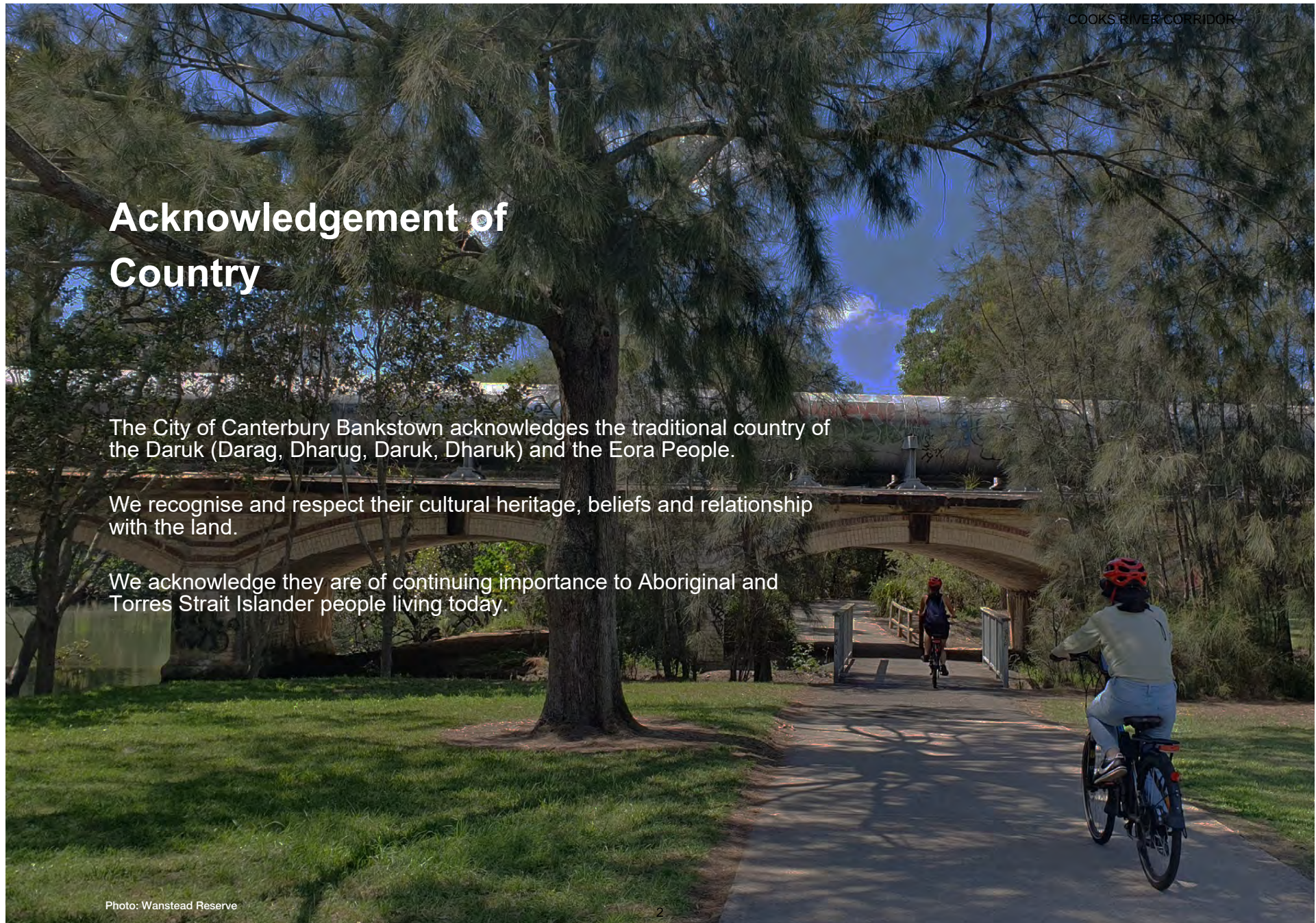
ATTACHMENTS

1. [!\[\]\(7a8011739ec4e250e2f89a547d75fb0a_img.jpg\)](#) Metropolitan Greenspace – Cooks River Corridor Plan, Canterbury-Bankstown Council, ARUP, March 2022

COOKS RIVER CORRIDOR

Metropolitan Greenspace

COOKS RIVER CORRIDOR PLAN



Acknowledgement of Country

The City of Canterbury Bankstown acknowledges the traditional country of the Daruk (Darag, Dharug, Daruk, Dharuk) and the Eora People.

We recognise and respect their cultural heritage, beliefs and relationship with the land.

We acknowledge they are of continuing importance to Aboriginal and Torres Strait Islander people living today.

Photo: Wanstead Reserve

CONTENTS

1 INTRODUCTION	4
2 PLANNING CONTEXT	6
3 STAKEHOLDER AND COMMUNITY ENGAGEMENT	9
4 VISION	15
5 CORRIDOR PLAN	17

COOKS RIVER CORRIDOR

INTRODUCTION 1

INTRODUCTION

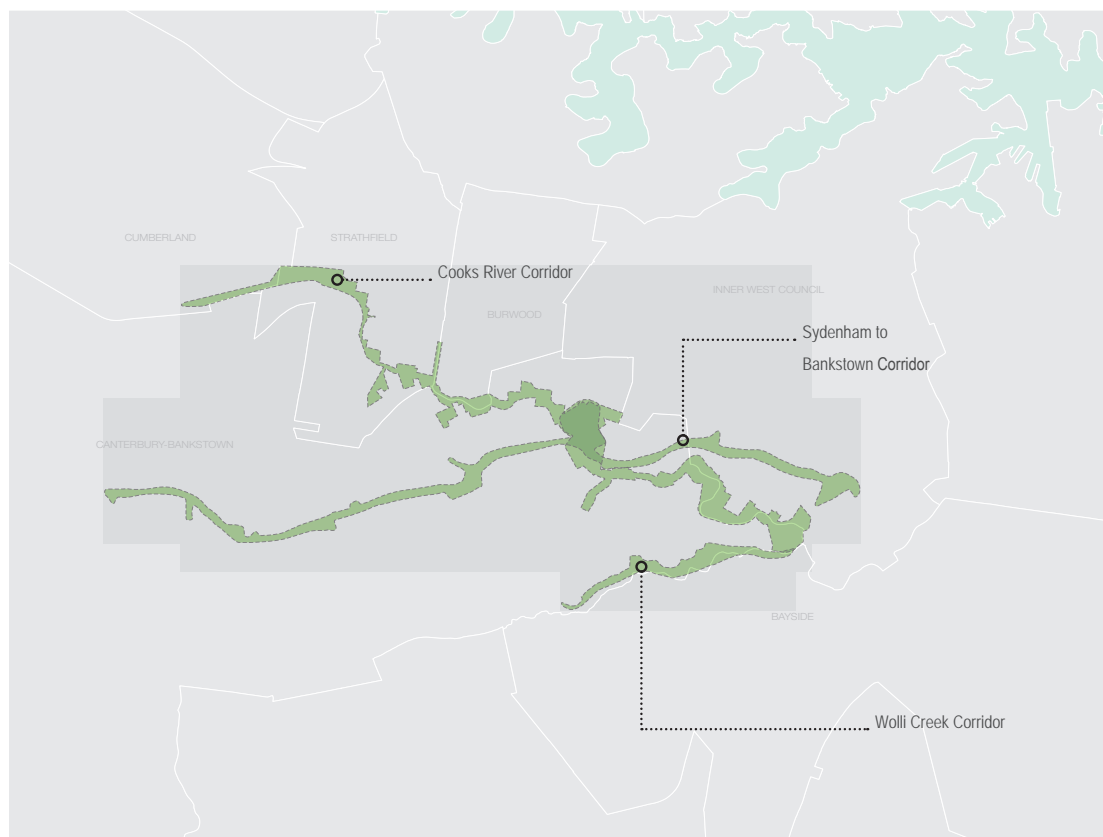
Open space is one of Sydney's greatest assets. The national parks, harbour, beaches, coastal walks, promenades, playgrounds and reserves are integral to character and liveability of the metropolitan region. As population density increases, the challenge to shape the built environment while promoting sustainable development and also maximising quality of life and well-being becomes more important. The COVID-19 pandemic has further emphasised the importance of open space in supporting the health and well-being of communities. In recognition of these challenges, the Government Architect New South Wales (GANSW) has identified a network of high-quality green spaces that connect town centres, public transport hubs and major residential areas. Known as the Sydney Green Grid, it is an integral part of the Greater Sydney Region and District Plans. The Greater Sydney Green Grid will keep the region cool, encourage healthy lifestyles, support walking and cycling, provide better access to open space, enhance bushland and support ecological resilience.

In 2020, Canterbury-Bankstown Council commenced planning for the land included within the local government area which formed part of three broader open space corridors;

- The Cooks River;
- Sydenham to Bankstown; and
- Wolli Creek.

All corridors are located within the South District in the Greater Sydney Metropolitan Region, and have been identified as Priority Green Grid Corridors as part of the Sydney Green Grid.

This area is one of the most culturally, socially and economically diverse communities in Sydney. It is also bound and intersected by ecological corridors and natural areas that are critical components of Greater Sydney's ecological and hydrological corridors as well as key contributors to the City's liveability and amenity. The corridors intersect many local government areas and central to this project has been the extensive involvement and collaboration from City of Canterbury Bankstown Council (CBCity), Strathfield Council, Sydney Water, Transport for New South Wales and many other stakeholders and community members.

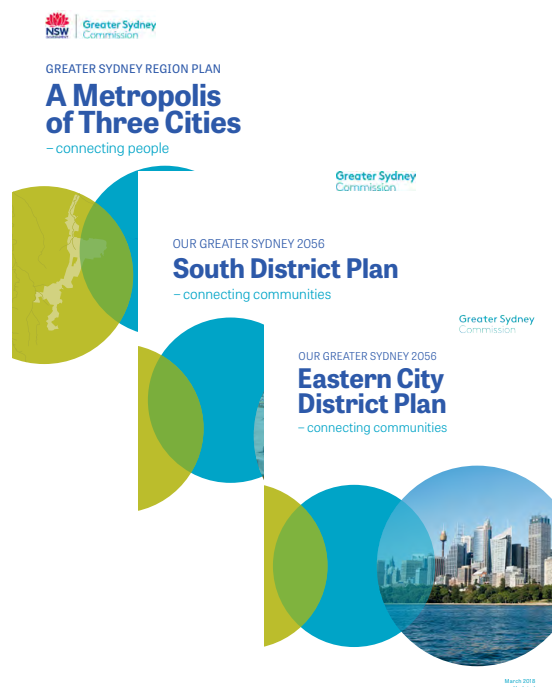


COOKS RIVER CORRIDOR

PLANNING CONTEXT 2

STRATEGIC PLANNING CONTEXT

Region, District and Local Plans



Greater Sydney Region Plan

The Greater Sydney Regional Plan, delivered by the Greater Sydney Commission (GSC), is a 40-year plan that sets out the vision for a "Metropolis of Three Cities" being the Eastern Harbour City (Sydney CBD), the Central River City (Parramatta) and the new Western Parkland City (Western Sydney Aerotropolis). The plan projects a population of 8 million people by 2056 and seeks to rebalance the growth, and benefits of growth, across Greater Sydney and support the 30-minute City, where residents can live within 30 minutes of their jobs, education and health facilities, services and great places.

As set out in this 40-year vision, green infrastructure such as urban tree canopy, green ground cover, bushland, waterways, parks and open spaces will be valued for its economic, social and environmental benefits and will help to establish the Greater Sydney Green Grid, a network of walking and cycling links that will become increasingly important in daily travel arrangements improving sustainability and the well-being of residents.

The District Plans contain the planning priorities and actions for implementing the Greater Sydney Region Plan, A Metropolis of Three Cities, at a district level and is a bridge between regional and local planning. All three corridors sit within both South and Eastern district and will help deliver priorities set in the Region Plan through both the District Plans.

South District Plan

The South District Plan is a 20-year plan to start implementing the 40-year vision for Greater Sydney in the Greater Sydney Region Plan and deliver places that are liveable, productive, and sustainable and supported by infrastructure. The plan reiterates the 10 Directions of the Greater Sydney Region Plan with planning priorities and actions for each district. The South District is expected to have a population of 945,350 people by 2036.

The South District Plan identifies three Green Grid priority projects, Bankstown to Sydenham Open Space Corridor, Cooks River Open Space Corridor, Wolli Creek Regional Park and Bardwell Valley Parklands.

Eastern District Plan

The Eastern City District Plan is a 20-year plan to manage growth in the context of economic, social and environmental matters to achieve the 40-year vision for Greater Sydney. It contains the planning priorities and actions for implementing the Greater Sydney Region Plan, A Metropolis of Three Cities, at a district level and is a bridge between regional and local planning.

The Eastern District Plan identifies three Green Grid priority projects; Iron Cove GreenWay and the Hawthorne Canal, Mill Stream and Botany Wetlands Open Space Corridor, and Cooks River Open Space Corridor.

COOKS RIVER CORRIDOR

Sydney Green Grid

A specific objective of both District Plans is to support delivery of the Sydney Green Grid to protect and provide open space and areas of biodiversity, particularly as housing density increases. GANSW proposed a network of high-quality green space that connects town centres, public transport hubs and major residential areas. Known as the Sydney Green Grid, it is an integral part of delivering the public benefit embedded in the Greater Sydney Region and Districts.

All three corridors investigated by Canterbury-Bankstown (Cooks River, Wolli Creek and Sydenham-Bankstown) can facilitate opportunities to increase tree canopy, improve accessibility, nurture habitat and enhance water quality within future projects. Specific opportunities identified for the corridors include:

- Planting trees to improve air quality and mitigate the urban heat island effect
- Creating and improving pedestrian and cyclist friendly environments
- Enhance the biodiversity and ecology through extending habitat areas and improving water quality

These opportunities associated with the ecological, hydrological and recreational grid can be realised through the Corridor Plans.



Sydney Green Grid

Green Infrastructure Policy

The Department of Planning and Environment and GANSW Greener Places draft policy sets an expectation for planning, design and delivery of green infrastructure in urban areas across NSW. The aim of the policy is to create a healthier, more liveable, more resilient and sustainable urban environment by improving community access to recreation and exercise, walking and cycling connections. It is about the creation of a networked urban ecosystem of green space that encompasses parks and open spaces including urban trees, streets, squares and waterways to help create a healthier, more liveable and resilient place to live.

The principles of integration, connectivity, multi-functionality and participation can be found embedded in the concepts for all three corridors, which further aligns the opportunity with Sydney's existing and developing urban policy framework.

CBCity 2028 Community Strategic Plan

A 10 year Community Strategic Plan that identifies seven Destinations for our future City. Goals relevant to improving open space relate to being 'Clean and Green', 'Moving and Integrated' and 'Healthy and Active'.



Green Infrastructure Policy



CBCity 2028 Community Strategic Plan

Pathways include:

- A clean and sustainable city with healthy waterways and natural areas
- Protect and promote local biodiversity
- Promote accessible parks and open spaces catering to all ages and cultures.

Connective City 2036 Local Strategic Planning Statement

A 20 year plan for land use and managing change into the future. Bankstown and Campsie are expected to grow as strategic centres. The plan identifies Cooks River Corridor as a part of City's Green Web to create an integrated network of ecological and green spaces between urban and suburban places.

Actions include -

- Advocate for an enhanced green corridor link along the Metro Corridor that connects wildlife habitats and ecological communities from the Cooks River
- Deliver the priorities of Council's existing policies in alignment with green web and active transport priorities
- Continue to identify and plan for new and improved public spaces to support residents, workers and visitors in priority growth areas
- Identify and promote local wildlife species



Connective City 2036 Local Strategic Planning Statement

COOKS RIVER CORRIDOR

STAKEHOLDER AND COMMUNITY ENGAGEMENT 3

WHAT WE'VE HEARD - COOKS RIVER

STAKEHOLDER ENGAGEMENT

A stakeholder workshop for the Cooks River Corridor was held online in April 2021. Various stakeholders attended including Strathfield Council, Inner West Council, Bayside Council, Burwood Council, Sydney Water, TfNSW, Sydney Metro, Crown Land department and the Cooks River Alliance.

Some of the key points to come out of the discussion were:

Recreation

- Public amenities and basic facilities - these are lacking in the upper catchment which reduces the usage of the corridor in this section
- Improve the attractiveness and recreational experience of the corridor and make it more comfortable – provide places to stop, provide shade (increase tree canopy), utilise urban design and landscape opportunities to attract users
- Safety considerations – sections of the channel are fenced due to public safety risks; people enter the channel but it can be too difficult to get out if the banks are too steep; increased naturalisation of the bank by Sydney Water and removal of fencing would help to make; there are a lot of underpasses and concealed spaces in the upper catchment which provide a safety concern
- Access the water for recreation is desired but there are challenges navigating the ownership of the river wall and edge access
- Protect the green spaces and look for the opportunities to enhance biodiversity

Culture and Heritage

- Culture and heritage are seen as important priorities for the corridor
- Indigenous appreciation - engagement with indigenous groups is required to understand their current and future priorities
- Governance and management – collaborative planning and working collectively to delivery of the overall strategy for the corridor is desired

Connectivity

- Wider cycle network – improve connectivity to other corridors and key cycleways that are part of the wider active transport network
- Local cycle access - improve local access to the Cooks River Corridor from properties, community facilities, open spaces and key local centres (Campsie, Auburn, Lidcombe, Strathfield north/south, Homebush, Olympic Park)
- Improve the shared path – make it wider and safer to improve user-ship; improve lighting; improve road crossings
- Connections across the river – these require upgrading as they are not in great conditions and not wide enough to accommodate both cyclists and pedestrian condition

Biodiversity

- Increase habitat – look for opportunities (within channel edge or elsewhere) to increase habitats to attract wildlife; naturalisation of the channel banks provides opportunity for habitat creation.
- Opportunities to develop wetlands – junction with Cox's River; freight rail land
- Endangered plant communities - need to be protected; salt marsh communities at risk
- Conflicts – increasing recreation spaces and activities conflicts with creating areas for protecting biodiversity
- Management of the habitats – education and training of the benefits and protection of natural habitats; management practices that increase habitats; monitoring of habitats to better understand varieties, diversity and volume
- Community – the river is well supported by the community; community groups (i.e. Mudcrabs) provide great support for the river

Hydrology

- Water quality is a big issue; reduce stormwater volumes entering river; look for opportunities to capture litter before it enters the river; look for WSUD opportunities to improve water quality before entering river; EPA could be a good resource/partner in this area
- Flooding was identified as another issue; channel wasn't designed to alleviate the amount of water that it now has to deal with; look to reduce hard surfaces/no increase to hard surface areas; need to also consider climate change impacts of sea level rise (effects wetlands – salt marsh and mangrove – which need to be cared and managed); active transport links and open spaces need to allow for flooding/sea level rise

COOKS RIVER CORRIDOR

As Sydney Water and TfNSW are key stakeholders, the following key considerations have been noted.

Key considerations from Sydney Water

Safety Considerations

Parts of the channel contain steep and slippery banks and are therefore fenced off for public safety. Fences are not required where there is a batter slope of 1:5 or shallower and in the areas that Sydney Water naturalises along water bodies. Fencing of naturalised areas is usually requested by Council and community groups. Sydney Water owns the concrete channels that were built by Public Works in the 1930s. These have a strategic plan for future naturalisation, however timing of the naturalisation is dependent on existing asset degradation.

Biodiversity, water quality and hydrology

It is important to consult with Sydney Water on any proposals that involve changes to waterside channels, slopes and vegetation.

Key considerations from TfNSW

Connectivity

The strategic cycle network plays an important role in the overall connectivity of the Cooks River Corridor.

The south Strathfield area has potential to become better connected to the Cooks River. It is important to provide opportunities to link community facilities to the network.

The connections to facilities from properties (now through roads) need to be improved for the overall connectivity of the precinct.

Consider opportunities to connect Auburn and Lidcombe to the Cooks River. There are opportunities to connect the Cooks River to the gateway motorway, airport link and connect into south Strathfield (Rockwood Road), Homebush and Olympic Park. There is an opportunity to consider Campsie as strategic centre with a cycle connection to Cooks River.

Consider delineated cycling and walking paths due to existing conflict between cyclists and pedestrians. There are opportunities for wider facility or wider shared paths, e.g. between Wardell Road and Illawarra Road). Also consider appropriate signage to direct users.

COOKS RIVER CORRIDOR

COMMUNITY ENGAGEMENT

In collaboration with

JOCCONSULTING
creative urban planners

The Green Corridors Community Survey was undertaken between April and May 2021 by JOC Consulting. In total, 176 participants undertook the survey. Many participants were passionate in their responses and expressed that the corridors are a great asset for the area, creatively referring to the corridors as the "recreation-al lifeblood", "lungs" and "life veins of the land". Even though the survey covered all three corridors, the questions led participants to provide responses for individual corridors.

For the Cooks River, the top three priorities that resulted from the survey were:

- Restore natural river processes, aquatic habitats and improve water quality
- Conserve and enhance the natural environment
- Encourage sustainable transport connections and promote safe walking and cycling access

Figure 3.1 shows all the priorities from the survey.

Restoring natural river quality was paramount to participants. Participants considered waterways important for their value in:

- Providing "life affirming", well-being qualities
- Offering opportunities to connect with nature and wildlife
- Supporting biodiversity and planetary health
- Maintaining vistas which are a key attraction of living and visiting the area
- Preserving the natural heritage of the area

Participants wished to see clearer waterways as the current state was noted as prone to littering and by extension is considered visually unappealing. Impacts on the natural environment were also important as participants communicated the need to restore a natural balance within the environment for flora and fauna that rely on aquatic habitats. As part of this, survey and social pinpoint responses suggested "bank naturalisation", by planting trees and low-lying native fauna habitats where otherwise concrete, fenced banks are present.

When asked what kinds of activities and uses did the participants want to see along the corridor, the top three answers were:

1. Nature regeneration
2. Walking paths
3. Quiet and relaxing spaces

Figure 3.2 shows all the Activities and Uses from the survey.

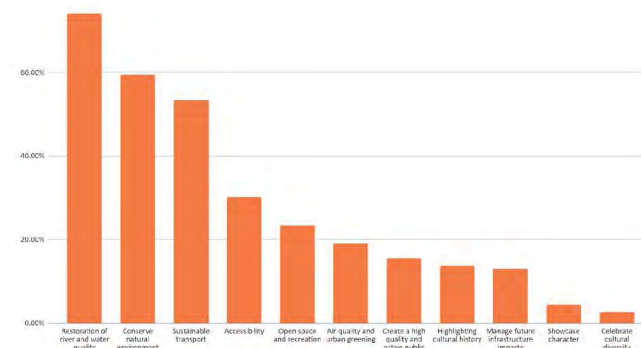


Figure 3.1 Priorities from the Community Engagement Survey

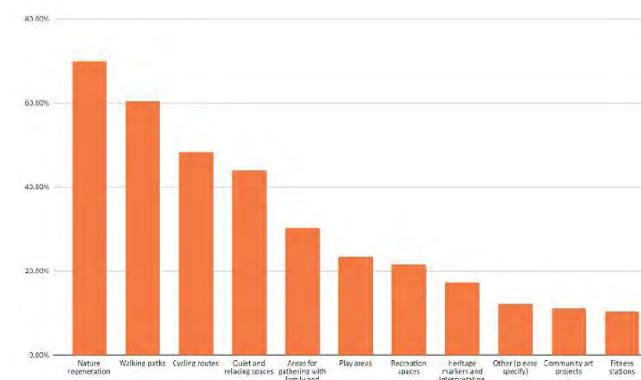


Figure 3.2 Activities and Uses from the Community Engagement Survey

COOKS RIVER CORRIDOR

"The Cooks River is a recreational lifeblood of this part of Sydney. It currently provides so much to so many people (sporting, recreation, quiet time in nature, play for kids) we should invest in these invaluable spaces."

- Response from the MGP Community survey



Most respondents recognised the health of the waterways as essential for a thriving ecosystem, and linked this with boosting the community's physical, social, and mental health. To the respondents, the Cooks River was a valuable asset that needed to be taken care of.

Improving amenities and social spaces came through strongly. Participants wished to see improved amenities and social spaces in the Cooks River Corridor. They envisioned a range of active and passive recreation areas that accommodate play and social infrastructure which are inclusive for all ages. It was expressed that facilities such as water stations and bike pump tracks would encourage further cycling and walking patronage.

Key ideas to improve amenities and social spaces include:

- Frequent water stations
- Well-lit walking paths such as solar lighting
- Accessible, unlocked public toilets
- Bike pump tracks
- Comfortable seating for rest
- Off-leash dog exercise areas
- Better signage and wayfinding
- Shade cloths/sails over playgrounds
- Additional rubbish bins

COOKS RIVER CORRIDOR



Photo: Wanstead Reserve

COOKS RIVER CORRIDOR

VISION 4

VISION + OBJECTIVES

The themes from the Green Grid have been used to shape the vision and objectives for the corridor along with community consultation.

Restore natural river systems of the Cooks River while creating spaces and linkages that support the diversity of the adjacent neighbourhoods

Objectives



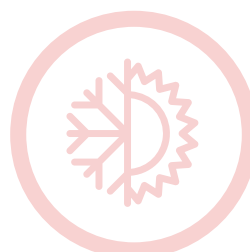
DRIVE A WATER QUALITY AGENDA THROUGH RECREATION AND ACCESS

- Create a 'playful' rivers edge and allow people of all ages and abilities to engage with the water
- Capture litter and filtering stormwater run off to improve water quality
- Explore opportunities for multi-functional integrated water management solutions



RESTORE NATURAL RIVER PROCESSES, LAND AND AQUATIC HABITATS

- Protect and enhance existing habitats and identify locations to adapt or improve the river to reintroduce aquatic habitats
- Explore opportunities to create ecological pathways along the corridor and connections to other areas
- Explore opportunities to naturalise the rivers edge, tributaries and streams where safe and feasible



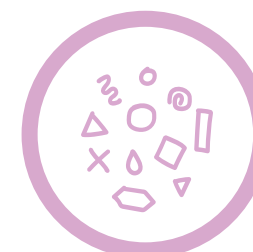
CREATE A RESILIENT CORRIDOR FOR FUTURE GENERATIONS

- Develop spaces that are adaptable to flood impacts
- Identify spaces for indigenous habitats to adapt to climate change impacts such as sea level rise
- Mitigate impacts of heat island affect through canopy coverage and shade
- Use the corridor to sequester carbon through revegetation, carbon farming and soil improvement



PROVIDE SAFE AND LEGIBLE ACCESS TO AND THROUGH THE CORRIDOR

- Create consistent wayfinding to and through the corridor
- Create safe linkages using CPTED principles and lighting
- Identify opportunities for links outside of the corridor to other Green Grid Corridors and neighbourhoods



RE-IMAGINE COOKS RIVER AS A HOME FOR DIVERSITY

- Provide a greater diversity of recreation activities for all ages and abilities
- Engage with the diverse communities and cultures along the corridor to create unique spaces
- Encourage community ownership and resilience through community gardens, food production and restoration projects

COOKS RIVER CORRIDOR

CORRIDOR PLAN 5

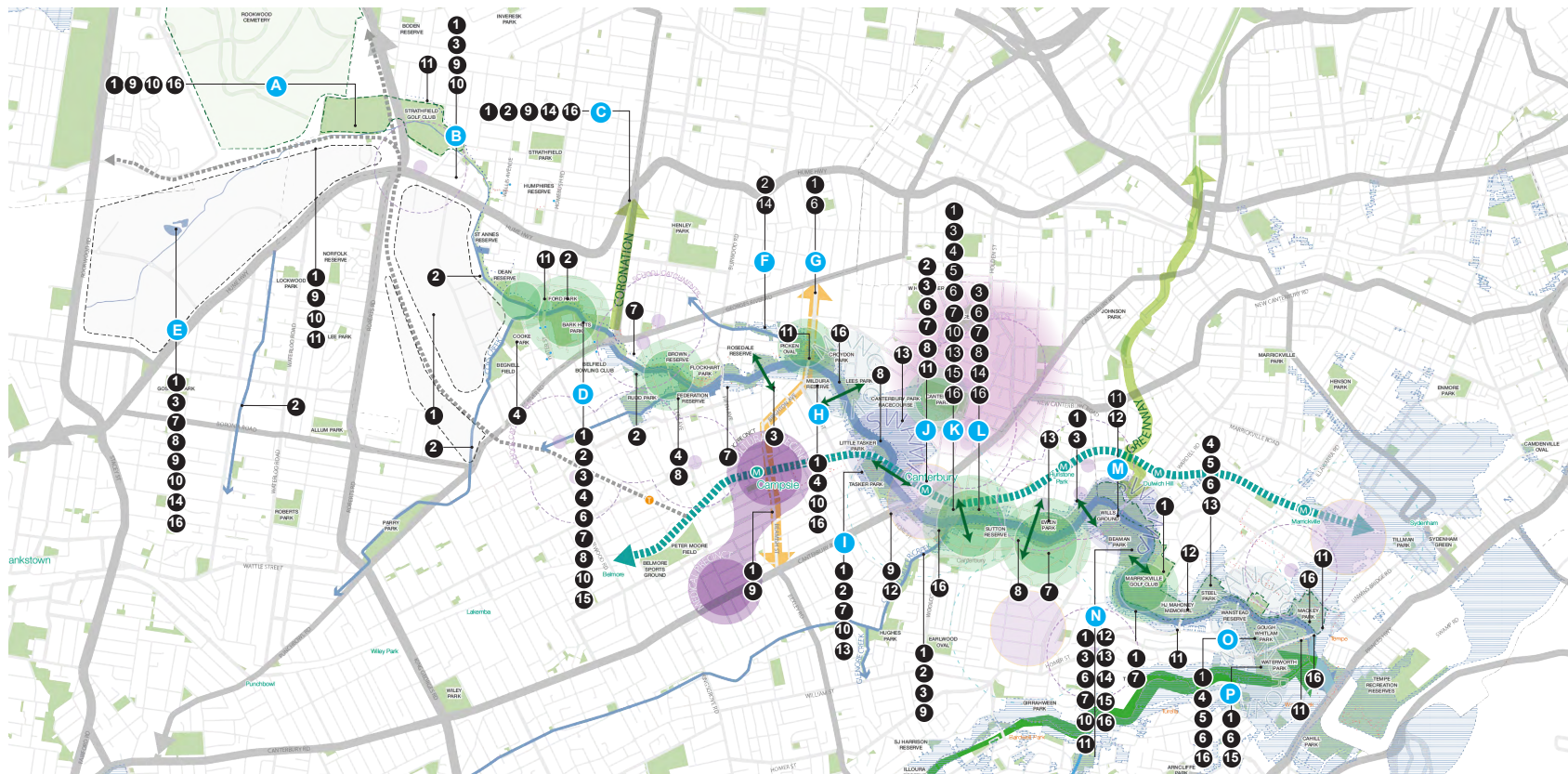
PROJECT OVERVIEW

To achieve the Cooks River vision and objectives a list of interventions have been identified across the corridor. Clustering of these interventions have then formed the priority list of potential projects. The project objectives that apply to each intervention have been identified with the corresponding coloured dot.

Each project is described in more detail in the following pages.

- 1 Canopy Cover** ●●●●●
 Mature tree canopy cover to provide shade and cooling benefits, particularly along pedestrian and cycleways, contributing towards achieving the premiers priority in planting 5 million trees by 2030.
- 2 Naturalisation** ●●●●●
 In collaboration with Sydney Water explore opportunities to naturalise the River and tributaries contributing to waterway health, flood mitigation, biodiversity and improving the character of the River.
- 3 Ecological Linkages** ●●●●●
 Create ecological linkages by increasing multi-storey vegetation of shrubs, plants and mature trees particularly at locations between existing plant communities. Incorporate strategic planting to contribute to wayfinding.
- 4 Play For Seniors** ●●●●●
 Play and exercise for the elderly e.g. giant chessboards, exercise equipment.
- 5 Play For All** ●●●●●
 Amenity that facilitates play and exercise for people of all abilities, children and teenagers to promote healthy and active lifestyles.
- 6 Extend the Day for Play** ●●●●●
 Create multi-functional play spaces that can be used at all times of day. Achieve through improved safety and assist in defining spaces and uses for twilight activity. Opportunities to include artistic installations and to engage with local artists and communities.
- 7 Amenity** ●●●●●
 Investigate to provide basic standard of amenity at regular intervals to improve comfort and encourage visitors e.g. shelter, seating, water filling stations, cycle racks and pumping stations.
- 8 Wayfinding and Entrance Points** ●●●●●
 Improve wayfinding and enhance entrances to the corridor and parks, this can be achieved through integrated signage, lighting, identifiable markers such as installation art and planting.
- 9 Strategic Streets** ●●●●●
 Enhance the walking and cycling experience and environmental performance along streets, particularly to key destinations to promote more sustainable modes of transport and safe movement of vulnerable groups i.e. children and seniors.
- 10 Pedestrian And Cycling Paths** ●●●●●
 Investigate to provide inclusive formal walking and cycling routes, surfaced paths at a minimum 3m wide.
- 11 Pedestrian And Cycling Priority** ●●●●●
 Investigate to provide pedestrian and cycling crossings where missing and upgrade 'z-crossings' to improve safety and ease of movement along the corridor.
- 12 Pedestrian And Cycle Bridge** ●●●●●
 Investigate to provide pedestrian and cycling connections where missing to improve safety and ease of movement along the corridor.
- 13 Water Storage** ●●●●●
 Integrate flood mitigation interventions into parks and reserves and sporting infrastructure - designing them to purposefully hold/contain water.
- 14 WSUD (Water Sensitive Urban Design)** ●●●●●
 Strengthen water sensitive urban design initiatives slowing down and capturing water run off to improve waterway health, particularly in areas adjacent the corridor at higher topographical levels. These could include increase in vegetation and permeable ground cover, rain gardens and swales.
- 15 Sustainable Energy** ●●●●●
 Investigate to provide renewable energy, particularly near sporting fields providing power for lighting and associated amenity and infrastructure. Opportunity to collaborate with local universities, institutions and/or start ups to use sites as testing grounds for new technologies. This infrastructure could also be used as a placemaking mechanism; an identifiable marker along the corridor promoting a sense of community pride.
- 16 Education** ●●●●●
 Provide interpretive signage, information boards or interactive displays to highlight Cooks River's vital flora and fauna (including over 50 species of birds), ecological processes and local heritage. This will foster a sense of community pride and stewardship for generations to come.

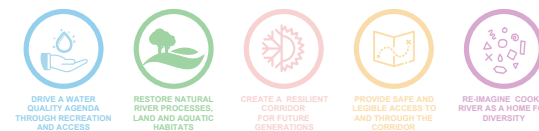
COOKS RIVER CORRIDOR



Cooks River Project Priority List and Interventions Map

Note: Corridor wide project Q not marked on the map as it extends along the entire length of the corridor.

COOKS RIVER CORRIDOR



A. Strathfield Golf Course (SC)

Policy Alignment: Strathfield Biodiversity Conservation Strategy and Action Plan 2020-2030, Strathfield Active Travel Plan (2016), Premiers Priority: Greening Our City, Pipeline Corridor Spatial Framework

- In collaboration with Strathfield Golf Course investigate opportunities to provide public access to the Centenary Drive underpass. This will facilitate a continuous pedestrian and cycle route linking Cooks River to the future Pipeline corridor.
- Provide wayfinding, lighting and Increase tree canopy coverage along the cycle way.



B. 1km Linear Park: Hume Highway to Humphires Reserve (SC)

Policy Alignment: Strathfield LSPS, Active Transport Action Plan (CBC) Active Travel Plan for Strathfield, Strathfield Biodiversity Conservation Strategy and Action Plan 2020-2030, Cooks River People's Plan, Premiers Priority: Greening Our City and Greener Public Spaces

- In collaboration with Sydney Water investigate opportunities to transform the current easement from Liverpool Road/Hume Highway to Fitzgerald Crescent into an accessible open space.
- Investigate opportunities to reduce the Verona Street carriageway - transforming it into a one way street with no kerbside parking and reallocating space to provide a linear park. Currently approximately seven lots require access from Verona Street, and only one development fronts the street.



C. Coronation Parade (SC)

Policy Alignment: Strathfield LSPS, Active Travel Plan for Strathfield, Strathfield Biodiversity Conservation Strategy and Action Plan 2020-2030, Cooks River People's Plan, Premiers Priority: Greening Our City

- Collaborate with Burwood Council to celebrate the heritage of Coronation Parade as a key active transport and recreation corridor spanning over 1km by providing:
 - a formal pedestrian path from Hill Street to Cooks River
 - tree canopy cover and multi-storey vegetation
 - recreation amenity for seniors - Strathfield having a higher proportion of persons aged 60 or older than the Strathfield Council area
 - integrated WSUD this could include swales and rain gardens.



D. Maria Reserve and Elliot Reserve Dog Park (SC)

Policy Alignment: Strathfield LSPS, Strathfield Biodiversity Conservation Strategy and Action Plan 2020-2030, Draft Cooks River Corridor Natural Area Plan of Management (2020), Active Travel Plan for Strathfield, Cooks River Pedestrian and Cycle Path: Improvement Study - Pathway Development Strategy, Draft Elliot Reserve Plan of Management (2020), Premiers Priority: Greening Our City

- Provide a formalised pedestrian and cycle path from Maria Street through Maria Reserve to Cooke Park and Begnell Field including new pedestrian crossings on Maria St and Water St.
- Space adjacent Cooks River and Coxs Creek provides opportunity for naturalisation (in collaboration with Sydney Water) and habitat creation.
- Increase tree canopy cover and provide play equipment including play for seniors (close proximity to bus stop) this will assist to activate the open space between Water St and Chisholm St.
- Opportunity for future land acquisition of adjacent land between Coxs Creek and Cooks River.
- Diversify uses of the park to include recreation amenity for children and seniors (good public transport access) and basic amenity such as seating, shade and lighting.
- Increase tree canopy along the south west boundary (adjacent residential development) to provide shade and a buffer to residents.
- Increase landscaping along boundaries shared with industrial lands to reduce visual and micro-climatic impacts.
- In collaboration with private landowners explore opportunities to extend the green and blue grid into industrial lands.

Note: Projects marked * SC are located within Strathfield Council and not within the Canterbury-Bankstown local government area. The Cooks River Corridor Plan was prepared in collaboration with Strathfield Council.

COOKS RIVER CORRIDOR



E. Yana Badu Wetlands

Policy Alignment: Connective City 2036 (CBC LSPS)* subject to collaboration with Sydney Water

- In collaboration with Sydney Water and private land owners investigate opportunities to provide a publicly accessible walking and cycling route south of the freight corridor and north of the industrial lands.
- In collaboration with Sydney Water explore opportunities to create a publicly accessible open space and recreation destination including boardwalks, viewing platforms, lighting, seating and shade.
- Create habitat for the endangered Green and Golden bell frog that are known to inhabit other water bodies in the area.



F. Picken Oval to Burwood Road

Policy Alignment: Open Space Strategy (CBC), Playgrounds and Play Spaces Strategic Plan (CBC), Canterbury Open Space Strategy

In collaboration with Sydney Water investigate opportunities to naturalise the stormwater channel from Brighton Avenue to Burwood Road. This would facilitate the removal of fencing and improve use of approximately 1.72ha of underutilised open space.

- Investigate opportunities to provide formal walking and cycling paths from Brighton Avenue to Burwood Road.
- Investigate opportunities to provide playspaces, seating, shading and lighting to activate the park throughout all times of the day.
- Design recreation and sporting amenity to capture and store water in the event of heavy rain.
- Design swales, rain gardens and strategic planting along hard surface edges to assist in flood mitigation.



G. Brighton Avenue

Policy Alignment: Campsie Masterplan (CBC)*, Connective City 2036 (CBC LSPS)*, Draft Active Transport Action Plan, Premiers Priority: Greening Our City

- Investigate opportunities with TfNSW to remove the central turning lane (approximately 500m) and reallocate road space to provide improved and safer cycle lanes.
- Increase mature tree canopy and multi-storey vegetation along both sides of the road to improve walkability, contribute to flood mitigation, and create an ecological corridor to assist in reinforcing the urban spine.



H. Mildura Reserve

Policy Alignment: Campsie Masterplan (CBC)*, Connective City 2036 (CBC LSPS)*

- Investigate opportunities to acquire land east of Brighton Avenue aligned with the Campsie Masterplan.
- Advocate a continuous formal pedestrian and cycle path along the southern bank, including a new crossing on Brighton Avenue.
- Investigate opportunities for a new bridge connecting from Clissold Parade to the future redeveloped Canterbury Racecourse precinct.
- Plant multi-storey vegetation along the shared boundary with residents to provide a buffer, shade and habitat.
- With good access to public transport, advocate play for seniors and basic amenity such as seating, shade, lighting and water filling stations.

Note: * Denotes project is directly referenced in policy/strategy report. Aerials are not to scale (adapted from sixmaps.nsw.gov).

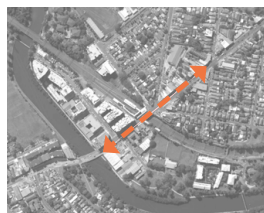
COOKS RIVER CORRIDOR



I. Tasker Park

Policy Alignment: Campsie Masterplan (CBC)*, Playgrounds and Play Spaces Strategic Masterplan (CBC)*, Leisure and Aquatics Strategy (CBC), Sports Facilities Strategic Plan (CBC - draft), Complete Streets (CBC), East West Cycle Link (Sydney Metro)*

- Co-ordinate with the Canterbury Leisure and Aquatic Centre upgrade to provide an integrated sports and recreation destination (public and private) along the corridor.
- In collaboration with Sydney Water investigate opportunities for river naturalisation with planting of new mangrove communities to provide habitat, contribute to waterway health and flood mitigation.
- In collaboration with Sydney Metro investigate to replace the Cooks River Walk Bridge to enable safe and comfortable pedestrian and cycle movement - including junctions at either end.
- Investigate opportunities to improve pedestrian footpath along the river bank coupled with shade and lighting.
- Enable renewable energy capture to power park facilities and lighting to encourage use throughout the day.
- Design recreation and sporting amenity to capture and store water in the event of heavy rain.
- Plant multi-storey vegetation to provide shade, habitat, assisting in flood mitigation and providing a buffer to residents.



J. Canterbury Station

Policy Alignment: Sydney Metro, CBC Community Strategic Plan 2028, Connective City 2036 (CBC), Creative City Strategic Plan 2019-2029 (CBC), Active Transport Action Plan (CBC)

- Advocate shade structures to improve pedestrian experience over Canterbury Road bridge. Design could reference the natural landscape and provide a visual link across the bridge.
- Located approximately 150m away from the River, improve wayfinding to/from Canterbury Station and mark corridor entrance west of Canterbury Road to the Sugar House Road.



K. Canterbury Bowling Club

Policy Alignment: Sydney Metro, CBC Community Strategic Plan 2028, Connective City 2036 (CBC), Creative City Strategic Plan 2019-2029 (CBC), Active Transport Action Plan (CBC)

- Investigate opportunity to relocate the existing waterfront dog park to the Canterbury Bowling Club site to increase access and views to the river.
- Provide diverse play spaces and basic amenity such as lighting, seating, shade, bike pumping station and water filling station.
- Install public art to celebrate the heritage of adjacent sites including the Sugar Works, this could be done through a public competition to facilitate community engagement.
- In collaboration with Sydney Metro explore opportunities for a cycle path south of the rail corridor connecting into the Cooks River cycleway.



L. Boat Harbour Heritage Precinct

Policy Alignment: Creative City Strategic Plan (CBC), CBC Community Strategic Plan 2028, Canterbury Leisure and Aquatic Strategy (CBC), Playgrounds and Play Spaces Strategic Plan (CBC)

- Celebrate and promote Canterbury Sugar Works and the Boat Harbour as a heritage precinct and destination along the River.
- Explore opportunities to utilise the Boat Harbour for ecological restoration and providing habitat.
- Explore opportunities to provide a pontoon or boardwalk to facilitate greater interaction with the water.

Note: * Denotes project is directly referenced in policy/strategy report. Aerials are not to scale (adapted from sixmaps.nsw.gov).

COOKS RIVER CORRIDOR



- Install public art referencing the adjacent the Sugar Works along the river bank. This could be implemented through a public design competition to engage with local and emerging artists.
- Provide seating, shade and lighting to enable people to stop and dwell.



M. Wardell Road Bridge

Policy Alignment: Marrickville Golf Course Masterplan Draft (Inner West Council)

- Investigate opportunities to increase pedestrian and cycle shared path to a minimum of 3m, or investigate opportunities to provide a dedicated pedestrian and cycle bridge east of Wardell Road Bridge.
- Investigate opportunities to provide direct access to Beaman Park off the bridge.
- Advocate to upgrade 'z-crossing' to a wombat crossing (south-side) and provide pedestrian and cycle priority crossing (north-side).
- 'Riverside Pathway' bridge underpass and wildlife underpass (north-side).



N. Beaman Park

Policy Alignment: Open Space Strategy (CBC) Sports Facilities Strategic Plan (CBC - Draft)

- Investigate opportunities to formalise pedestrian paths through the park e.g. from Vera Lane and the corner of Vera Avenue and Flinders Street.
- Advocate extending the day for play with solar powered lights.
- Provide ecological links by extending mangrove communities along the rivers edge and provide information boards on the importance of mangroves for water management and habitat creation.



O. Gough Whitlam Park

Policy Alignment: Gough Whitlam Park and Waterworth Park Plan (CBC)*, Playgrounds and Play Spaces Strategic Masterplan (CBC), Canterbury Open Space Strategy

- Capitalise on existing amenity and access, and reinforce Gough Whitlam Park as a major destination for passive recreation for all.
- Provide ecological linkages by increasing multi-storey vegetation and canopy cover, particularly salt-marsh vegetation along the riverbanks.
- Provide information boards on the importance of wetlands, mangroves and salt-marshes for water management and habitat creation.
- Diversify passive recreation amenity for people of all ages, including seniors and abilities e.g. giant chessboards and integrated nature play.
- Provide shade, particularly over the BBQ areas and improve lighting to facilitate night use.
- Improve Bayview Avenue entrance to the park and wayfinding to/from Tempe Station (approximately 200m away) and Wolli Creek Regional Park.
- Investigate opportunities to upgrade crossing at Bayview Avenue to give pedestrians and cyclists priority.
- In collaboration with TfNSW investigate opportunities to increase footpath over Bayview Avenue bridge to a minimum of 3m to provide a safe and comfortable bi-directional shared path or provide a new separated pedestrian and cycle bridge.

Note: * Denotes project is directly referenced in policy/strategy report. Aerials are not to scale (adapted from sixmaps.nsw.gov).

COOKS RIVER CORRIDOR



- Integrate flood mitigation strategies with car parks, recreation and sporting amenity to capture and storage of water in the event of heavy rain.
- Assist in flood mitigation with strategic planting and use of swales and rain gardens, particularly along hard surfaced area such as footpaths and car parks.



P. Waterworth Park

Policy Alignment: Creative City Strategic Plan (CBC), CBC Community Strategic Plan 2028, Creative City Strategic Plan 2019-2029 (CBC), Gough Whitlam and Waterworth Parks Draft Masterplan 2017 (CBC)*

- In collaboration with Sydney Water investigate to formalise fishing points and viewing platforms at the water's edge.
- Improve pedestrian and cycle access through the site and provide amenity such as seating, shelter, water filling stations and bike racks.
- Provide ecological linkages by increasing multi-storey vegetation and canopy cover, particularly along the river and creek banks.
- Provide information boards on the importance of wetlands, mangroves and salt marshes for water management and habitat creation.
- Improve Bayview Avenue entrance to the park and wayfinding to/from Tempe Station (approximately 200m away).
- Improve access and signage to Wolli Creek's Lower Track and Jackson Track along Unwin Street.
- Advocate to enable renewable energy capture to power lighting and park facilities.
- Integrate WSUD initiative such as rain gardens, wetlands and strategic planting of vegetation, particularly west of the park at the bottom of the steep terrain up to Unwin Street. Landscaping could also contribute to wayfinding and providing a visual link/continuation between Waterworth Park and the Regional Park.



Q. Cooks River Wayfinding (corridor wide)

Policy Alignment: Active Transport Action Plan 2020-2030 (CBC), Bankstown Complete Streets (CBC), Canterbury Bike Plan 2016 (CBC), Creative City Strategic Plan (CBC)

- Provide a suite of wayfinding and signage typologies that can be installed across the corridor, strengthening the identity of the River.
- Locate signage or markers such as art installations or lighting at key entrances to the corridor and parks and at key intersections.
- Collaborate with local Indigenous and cultural groups to explore opportunities to recognise and celebrate sites of cultural significance. This could be reflected in information boards, symbolism, art or adopting names in local languages.
- Collaborate with the local community groups to explore opportunities to for storytelling of past histories.
- Investigate opportunities to integrate brail or more tactile signage for the visually impaired.
- Provide information boards at locations of flora and fauna communities to communicate their importance and role in maintaining environmental and waterway health. This will contribute to fostering a sense of pride and ownership.

Note: * Denotes project is directly referenced in policy/strategy report. Aerials are not to scale (adapted from sixmaps.nsw.gov).

COOKS RIVER CORRIDOR



Item No: C0922(2) Item 3

Subject: NOTICE OF MOTION: COOTAMUNDRA-GUNDAGAI COUNCIL DEMERGER SUCCESS

Council Meeting at its meeting on 13 September 2022 resolved that the matter be deferred to the meeting to be held on 20 September 2022.

From: Councillor Justine Langford

MOTION:

That Council:

1. Notes that on the 24th of August 2022, NSW Minister for Local Government, Wendy Tuckerman, announced her decision to demerge Cootamundra-Gundagai Regional Council;
2. Notes that the demerger was considered under section 218CC of the NSW Local Government Act;
3. Notes that Section 218CC (6) in part states *“The Minister is required to abide by the following clause by making grants under [section 620](#) or using money otherwise appropriated by Parliament for the purpose, to ensure that the cost of any de-amalgamation of the new area resulting from a business case submitted under this section is fully funded”*;
4. Writes to the Mayor or Cootamundra- Gundagai Regional Council congratulating Mayor Sheahan for the success of the demerger case and the reinstatement of the local government areas of Cootamundra and Gundagai in line with community wishes; and
5. Writes to the Minister for Local Government, Wendy Tuckerman, congratulating her on her decision to support the demerger of Cootamundra-Gundagai Regional Council, and reminding her that 62.5% of the voters in the poll at the local government election held in the Inner West LGA in December 2021 supported the demerger of Inner West Council.

Background

Cootamundra and Gundagai Councils were two of the many local government areas, including Ashfield, Leichhardt and Marrickville, that were forcibly amalgamated by the NSW Coalition Government in 2016.

The NSW Government’s arguments for forced amalgamation insisted that there would be financial benefits for residents of larger councils, and improved services. Independent research carried out by academics at UNE and UTS has found that at best amalgamation into larger local government areas was financially neutral, but more often that not the result was financially negative.

In the case of Cootamundra-Gundagai Regional Council there were increased costs with the larger council, and this has been the experience of many newly amalgamated local government areas.

There is no serious argument that larger local government areas have diluted community democracy, and that the process of forced amalgamation was inherently undemocratic. It

follows that the process of forced amalgamation undermines the legitimacy of local government in the communities they are supposed to serve.

The poll conducted at the most recent local government elections in December 2021 attests to the unpopularity of Inner West Council as an entity, and if repeated in all forcibly amalgamated area the result against forced amalgamation would likely be repeated.

Attachment: Media Statement of the NSW Minister for Local Government

<https://www.olg.nsw.gov.au/media-releases/cootamundra-gundagai-council-to-demerge/>

Officer's Comments:

No further comments were required for this Notice of Motion.

ATTACHMENTS

Nil.

Item No: C0922(2) Item 4

Subject: NOTICE OF MOTION: TEMPE RAILWAY STATION ACCESSIBILITY

Council Meeting at its meeting on 13 September 2022 resolved that the matter be deferred to the meeting to be held on 20 September 2022.

From: Councillor Justine Langford

MOTION:

That Council:

1. Note that the stairs leading from the Tempe Railway Station car park, located on Richardson's Crescent, to the concourse, have been closed for at least 18 months;
2. Note the temporary access to Tempe Railway Station from the car park via platform one is not well lit, has more trip hazards, is located in the middle of the car park, and anecdotally is not favoured by local residents;
3. Understands that the issue is the need to repair and resurface a small area of the concourse at the top of the stairs;
4. Expresses the view that it is not acceptable for the regular access to be closed for such a long period of time; and
5. Writes to the Premier of NSW, The Hon. Dominic Perrottet, The Minister for Transport, The Hon. David Elliott, The Member for Summer Hill and Shadow Minister for Transport, Jo Haylen, and The Greens Spokesperson for Transport Ms Abigail Boyd, expressing Inner West Councils request that immediate action be taken by the NSW Government to complete the maintenance work on the concourse at Tempe Railway Station, and the usual entrance be reopened as soon as possible.

Background

For the last several years Transport for NSW has undertaken renovation of the stairs leading to the concourse and platforms at Tempe Railway Station. During this time the usual access from both sides of Tempe Railway Station has been closed while the stairs have been replaced, and alternative means of access via platforms one and four have been arranged.

Following the intervention of Inner West Council at street level access was retained on platform four, thus making Tempe Railway Station partially accessible. Works have been completed on the stairs on the eastern (Princes Highway) side of the railway station, and for a brief time the stairs on the Marrickville side were also reopened following their replacement.

At some time there was obviously an issue with the concourse on the Marrickville side of the concourse, and the stairs on that side were once again closed. That was more than 18 months ago.

The temporary access to the Railway Station from the car park on the Marrickville side of the station offers poor amenity to passengers, and presents some safety concerns, particularly after dark. The current temporary access is also less convenient for passengers.

There appears to have been no advice from Transport for NSW about the problem, or when it will be fixed. The lack of communication to users of Tempe Railway Station, and the time the usual access to the railway station has been closed is not acceptable. This raises serious concerns about the NSW Government's management of the public transport system.

Officer's Comments:

No further comments were required for this Notice of Motion.

ATTACHMENTS

Nil.

Item No: C0922(2) Item 5

Subject: NOTICE OF MOTION: SUPPORT FOR WOLLI CREEK REGIONAL PARK

Council Meeting at its meeting on 13 September 2022 resolved that the matter be deferred to the meeting to be held on 20 September 2022.

From: Councillor Justine Langford

MOTION:

That:

1. Recognises the Wolli Creek Regional Park (WCRP) as a regional resource warranting major support from all Councils in the region; and
 2. Calls on the State Government to take the steps necessary to:
 - a) expedite the acquisition of the remaining lands necessary to complete WCRP after decades of slow progress, and;
 - b) ensure that WCRP is supported by increased funding and staffing to provide for its continued protection and enhancement.
-

Background

The Wolli Creek Preservation Society is seeking support from Councils across the inner South-West region of Sydney for its campaign to finally, after 25 years, achieve the completion of the Wolli Creek Regional Park.

Officer's Comments:

No further comments were required for this Notice of Motion.

ATTACHMENTS

1. [!\[\]\(098e47036f78288d477e334896a43770_img.jpg\) Background to WCPS 2022 campaign to complete Wolli Creek Regional Park](#)

Background to WCPS 2022 campaign to complete Wolli Creek Regional Park

- In 1988, under the Greiner government, Tim Moore announced that the Wolli Creek bushland would be “permanently protected”.
- In 1993, the Wolli Creek Preservation Society (WCPS) first sought the establishment of the WCRP via a private member’s Bill.
- In 1998, the Carr government promised to establish the Wolli Creek Regional Park (WCRP).
- In 1999, 2006, 2010, and 2018, WCPS ran campaigns calling on successive ALP and Coalition governments to speed up the glacially-slow rate of acquisition of lands earmarked for WCRP.
- By 2022, the community has waited **an entire generation** for their governments to deliver on their promises.
- Five blocks of land, constituting just 2% of the Park remain to be acquired. These are small, but critical to the connectivity of the Park’s bushland and access to it. They are owned by Sydney Water and three private owners.
- **Sydney Water** owns the largest block. Since 2017, it has been planning to build an Odour Control Unit (OCU) in bushland on this block at the eastern end of the Park.
- Following strong public reaction (over 5,000 signatures on a petition) and new technical information (toxic gases in the local sewer), Sydney Water has put these plans ‘on hold’ while a new location for the OCU at Arncliffe is investigated.
- Sydney Water regards this alternative as “a better location both from a technical point of view and removes the need to place long-term infrastructure in Sydney’s bushland.” It “would like to make a definitive decision to remove [the Wolli site] as an option” and “when this issue [a legal obstacle to site access] has been resolved the [Wolli bushland] can be “conclusively” ruled out as a potential site.
- WCPS believes that this clears the way to begin the process of transferring the Sydney Water land to National Parks and Wildlife Service for the Regional Park.
- **The lands in private hands** are the lower portions of four extremely long blocks (about three times the length of a common house block). These portions lie below a significant cliff line that makes them essentially inaccessible to the owners. They are already zoned as Regional Open Space.
- WCPS wants to see an active approach immediately taken to the acquisition of these portions, rather than, as at present, waiting for the owners to approach the government to acquire these effectively unusable portions of their land.
- The attached diagrams show the eastern end of the Wolli Creek Regional Park, the location of the blocks in question, and the position of the cliffline.

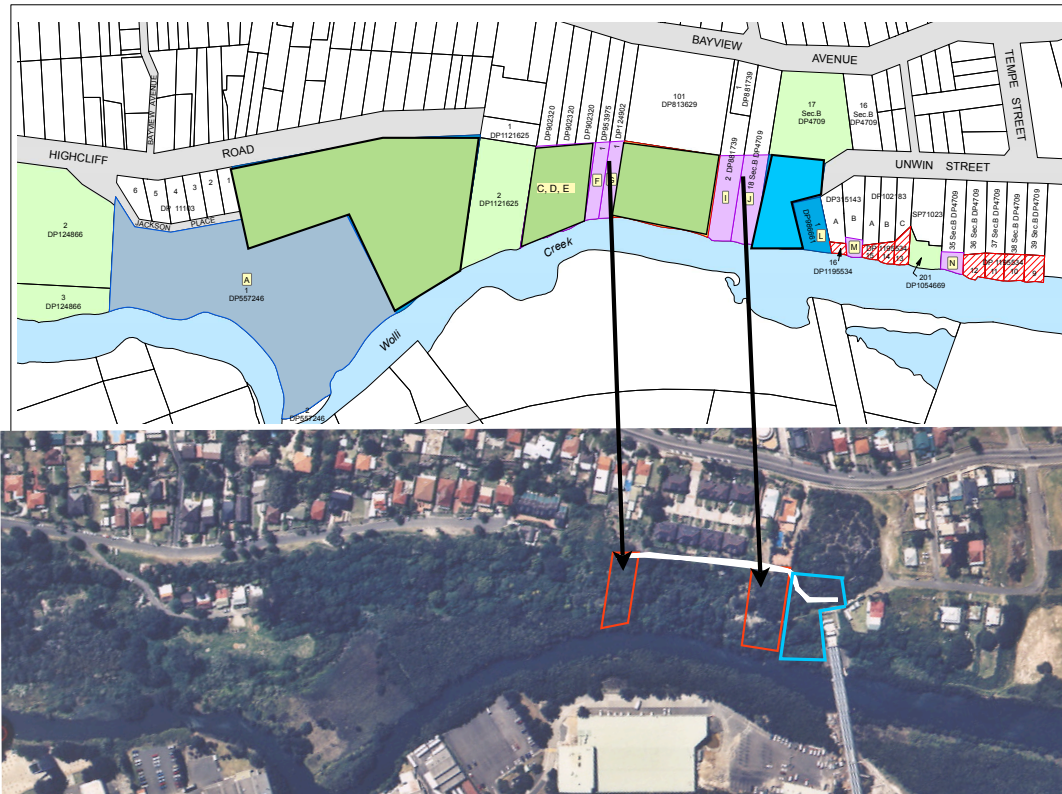
Land ownership and cliff line Wolli Creek Regional Park - Eastern end

- Wolli Creek Regional Park.
- In transition to NPWS
- RMS, under remediation before transfer
- Private, zoned open space
- Sydney Water, needed for Park
- Sydney Water

Outline of portions of private blocks
zoned Regional Open Space



Approximate line of
cliff in the area



Aerial view
of the cliff
line below
the two
easternmost
private
blocks. For
the other
private
blocks this is
even
steeper.

Item No: C0922(2) Item 6

Subject: NOTICE OF MOTION: PARKING

Council Meeting at its meeting on 13 September 2022 resolved that the matter be deferred to the meeting to be held on 20 September 2022.

From: Councillor Liz Atkins

MOTION:

That Council:

1. Notes an increase in reports of illegal and/or dangerous parking on residential streets across the Inner West;
2. As soon as possible, undertakes a comprehensive and targeted education campaign to tackle illegal parking on streets across the Inner West - with information on a prominent page in the Inner West News, local media, social media and on the council website; and
3. Requests staff to prepare a report on the extent of illegal and dangerous parking and possible solutions before the end of this calendar year.

Background

There are increasing numbers of reports of illegal and dangerous parking across the Inner West via email to councillors and on social media. Residents are becoming increasingly frustrated and there is the potential for people to take action themselves which is not necessarily appropriate. While residents acknowledge that council will send rangers to investigate, often the offending vehicle has left by the time rangers arrive, whether that is on the same day as the complaint or later.

Illegal and dangerous parking particularly impacts people with prams or wheelchairs, small children, walking sticks, and sight impaired and older people, making our streets less accessible.

Examples include:

- residents unable to exit their garages because of cars parked across the garage entry
- Cars parked in narrow lanes preventing residents from exiting garages and driveways
- Cars parked too close to corners affecting visibility for turning vehicles and pedestrians
- Trailers, jet skis, boats and caravans taking up spaces permanently
- Double parking
- Removal or defacing of “no parking” signs resulting in vehicles parked in “no parking” zones
- Cars parked partially or fully on footpaths
- Cars parked in driveways across the footpath.

Officer's Comments:

No further comments were required for this Notice of Motion.

ATTACHMENTS

Nil.

Item No: C0922(2) Item 7

Subject: NOTICE OF MOTION: BALMAIN TOWN HALL AND CIVIC PRECINCT PLANNING

Council Meeting at its meeting on 13 September 2022 resolved that the matter be deferred to the meeting to be held on 20 September 2022.

From: The Mayor, Councillor Darcy Byrne

MOTION:

That Council:

- 1. Endorse the formation of a Balmain Town Hall and Civic Precinct Community working group; and**
- 2. Officers to develop draft Terms of Reference and an Expression of Interest process for interested residents who may wish to be members**

Background

On 13th July a community meeting was held at Balmain Town Hall and a community visioning exercise for the Civic Precinct on Darling Street Balmain began. This Civic Precinct extends from Balmain PCYC to the new Balmain Square and notably includes the Town Hall and Library, Court House, Post Office and Police Station, as well as a variety of other smaller buildings and uses within the precinct.

The community meeting was well attended, and ideas were generously shared both on the night and in the days that followed.

The Civic Precinct is the gateway to Balmain, and it represents the most famous and historic blocks within Balmain, one of the most famous suburbs in Australia. The precinct is of great heritage value and while the buildings themselves remain in reasonable condition, apart from a few of the buildings, as a whole the precinct no longer forms the hub of the community. Restoring and repurposing these buildings in a manner the community can use and value represents an important opportunity and is at the heart of our shared vision as expressed at the first visioning meeting in July.

To progress this shared vision attendees at the meeting called for a community working party to be formed.

The community working party would consider the interests of both local business and residents and put forward consensus views for consideration of key stakeholders consisting of the relevant property owners including the NSW Department of Justice, owner of the Balmain Court House, NSW Police, and Inner West Council.

Officer's Comments:

No further comments were required for this Notice of Motion.

ATTACHMENTS

Nil.

Item No: C0922(2) Item 8

Subject: NOTICE OF MOTION: BALMAIN SAILING CLUB PONTOON UPGRADE

Council Meeting at its meeting on 13 September 2022 resolved that the matter be deferred to the meeting to be held on 20 September 2022.

From: The Mayor, Councillor Darcy Byrne

MOTION:

That Council:

1. **Allocate \$50,000 funding on a 50:50 basis for the upgrade of the Balmain Sailing Club pontoon, to provide safer publicly accessible facilities for small craft and junior sailing; and**
 2. **Enter into an appropriate funding agreement with Balmain Sailing Club to assist administration of the funding.**
-

Background

Balmain Sailing Club is a vibrant part of the Inner West Community, with membership at near record levels; they hold nearly 150 sailing races every year and in 2022 they will hold the first fully public Balmain Regatta since the beginnings of the COVID. The Regatta was first held in 1849 this year's event on Sunday, October 30 will include a convoy of tugs and historic working launches for the first time.

Balmain Sailing Club is in the process of constructing a new small craft launching pontoon the Balmain Sailing Club and it has been requested that Council provide up to \$50,000 on a 50/50 funding basis to allow completion of this project.

The pontoon will be a new, accessible and public facility that for the first time will create a safe, flat launching and retrieval area for small craft like sailing dinghies, Kayaks, paddle boards and rowing boats at the Water Street Reserve. The new pontoon will be wheelchair accessible, connecting with the ramps leading up to the public elevator in the neighbouring Hopetoun Quays development and on to the further ramps up to Water Street. The new pontoon means that for the first time, the Balmain Sailing Club, which is the only sailing club in the Inner West Council area, will be able to encourage junior sailing which until now has been impossible because of the steep and inherently unsafe nature of previous facilities.

Balmain Sailing Club will share this new facility with the public and it will be accessible by the public at all times. It meets the objective of making the harbour more available to more people.

Officer's Comments:

Comment from Acting Director Infrastructure:

This project will provide an accessibility upgrade to a publicly available wharf and can be funded in the September Quarterly Budget Review process.

The Balmain Sailing Club operates under leases from Transport for NSW and Council. The works are in line with the lease agreements. Approval of details of the works is required for additions and improvements under the lease provisions. The sailing club has advised approvals are well progressed.

In line with similar Council funded foreshore facilities, a legal funding agreement would be developed outlining requirements, with funding provided upon completion of the proposed works.

ATTACHMENTS

Nil.